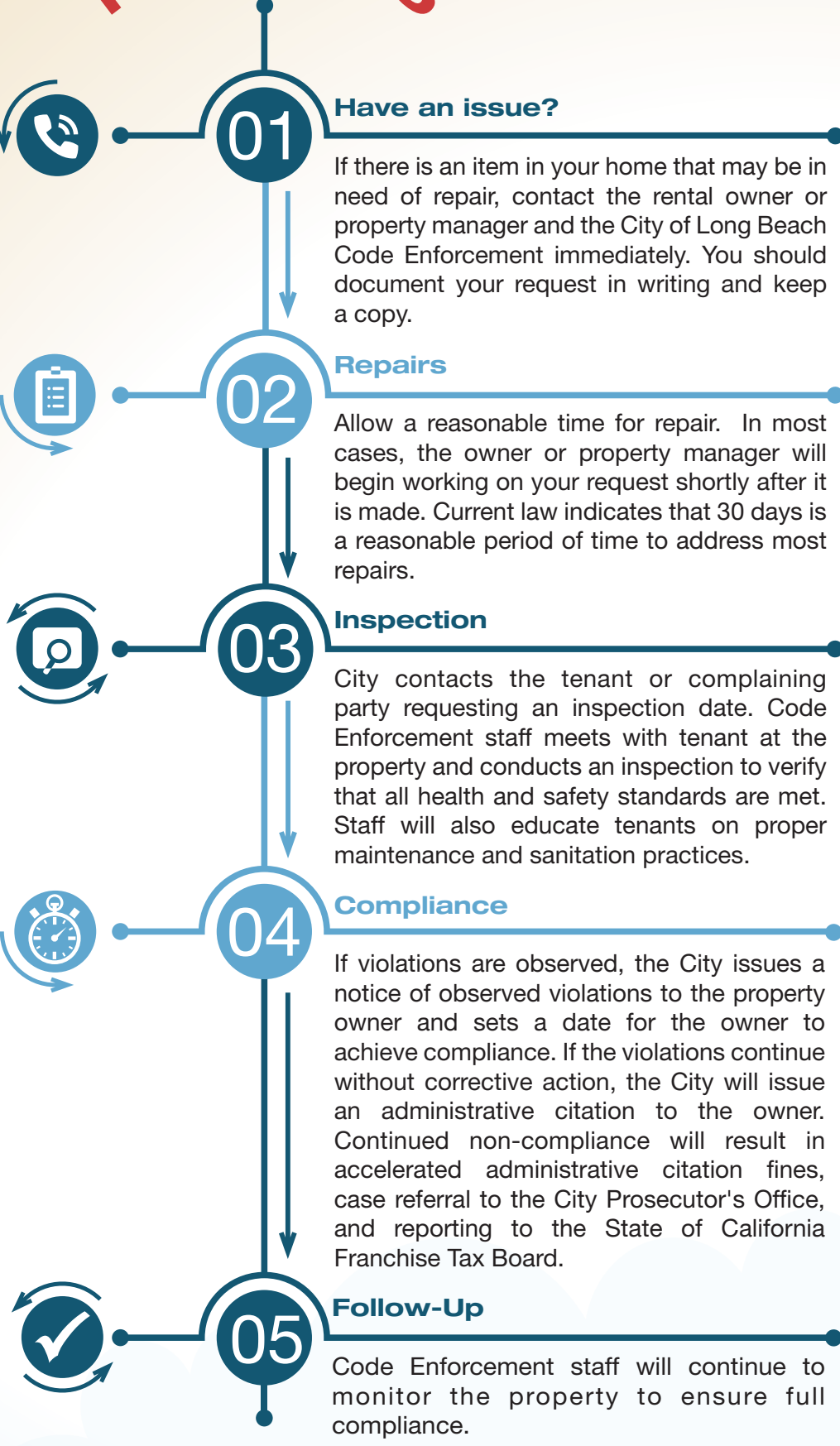




Proactive Rental Housing Inspection Program (PRHIP)

PROCESS



Dwell Well. Live Well.

- Proactive inspection program required for residential rental buildings consisting of four or more units.
- Key measurements that prove a successful program is in place: High percentage of compliance, customer satisfaction, and a steady decrease in neighborhood blight.
- All complaints are confidential. Owners and residents of rental properties have specific rights and responsibilities under current state and local laws. The City strives to ensure that all complaints remain anonymous.

Proactive Rental Housing Inspection Program (PRHIP) Ordinance

To safeguard the stock of decent, safe, and sanitary rental housing, the City of Long Beach established a Proactive Rental Housing Inspection Program. The Program was created to maintain livability standards, protect against blight, and secure Citywide compliance through efficient and effective enforcement of the Long Beach Municipal Code.

The City has been enforcing this Program for many years, pursuant to the California Health and Safety Code. The PRHIP Ordinance allows the Program to now be codified into the Long Beach Municipal Code. Further, the Ordinance addresses property owner notification and the distribution of the Tenant/Landlord Rights and Responsibilities handout.



Complaints?

Apart from the proactive inspection process, the City will respond to qualified tenant habitability complaints at any time: **562.570.6504.**

For additional information about the PRHIP, call 562.570.6504 or visit www.lbds.info/prhip

This information is available in alternative format by request at 562.570.3807.
 Esta información está disponible en un formato alternativo, previa solicitud al 562.570.3807.
 Available ang impormasyong ito sa alternatibong format kung hihilingin sa 562.570.3807.
 ព័ត៌មាននេះអាចរកបានជាទម្រង់ប្រកួតសារផ្សេងៗតាមសំណើ ដោយការហៅទូរស័ព្ទទៅលេខ 562.570.3807 ។
 For an electronic version of this document, visit our website at www.lbds.info.